

# **M** **E** **DIATRONIK**

## **USER MANUAL**

- 1. Install Software.**
- 2. Settings.**
- 3. Update**
- 4. Calc Tool.**
- 5. Work for OBD Module**
- 6. Work with SRS Toyota-Subaru**

## 1. Install

After receiving the security key, you turn to your software supplier and he sends you an archive with the program files and license.

Unpack the archive to any convenient folder on your computer, insert the security key into the USB and you can run the program.

Driver for OBD adapter can be downloaded here

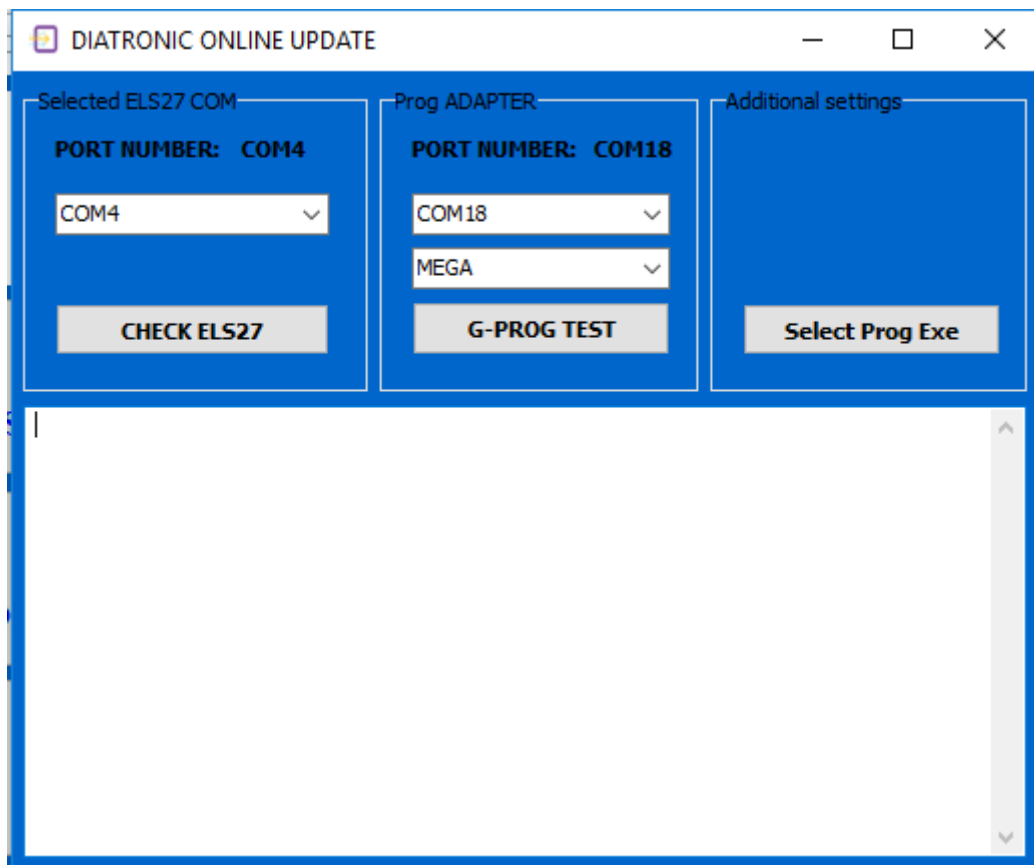
[http://els27.ru/files/PL2303\\_Prolific\\_DriverInstaller\\_v1\\_12\\_0.zip](http://els27.ru/files/PL2303_Prolific_DriverInstaller_v1_12_0.zip)

Included with the program is a program ELS27Baudrate.exe

With her you can check and configure OBD2 adapter supplied,

**please note that the speed of the adapter in this program, you need to set 2mb/s (2 000 000).**

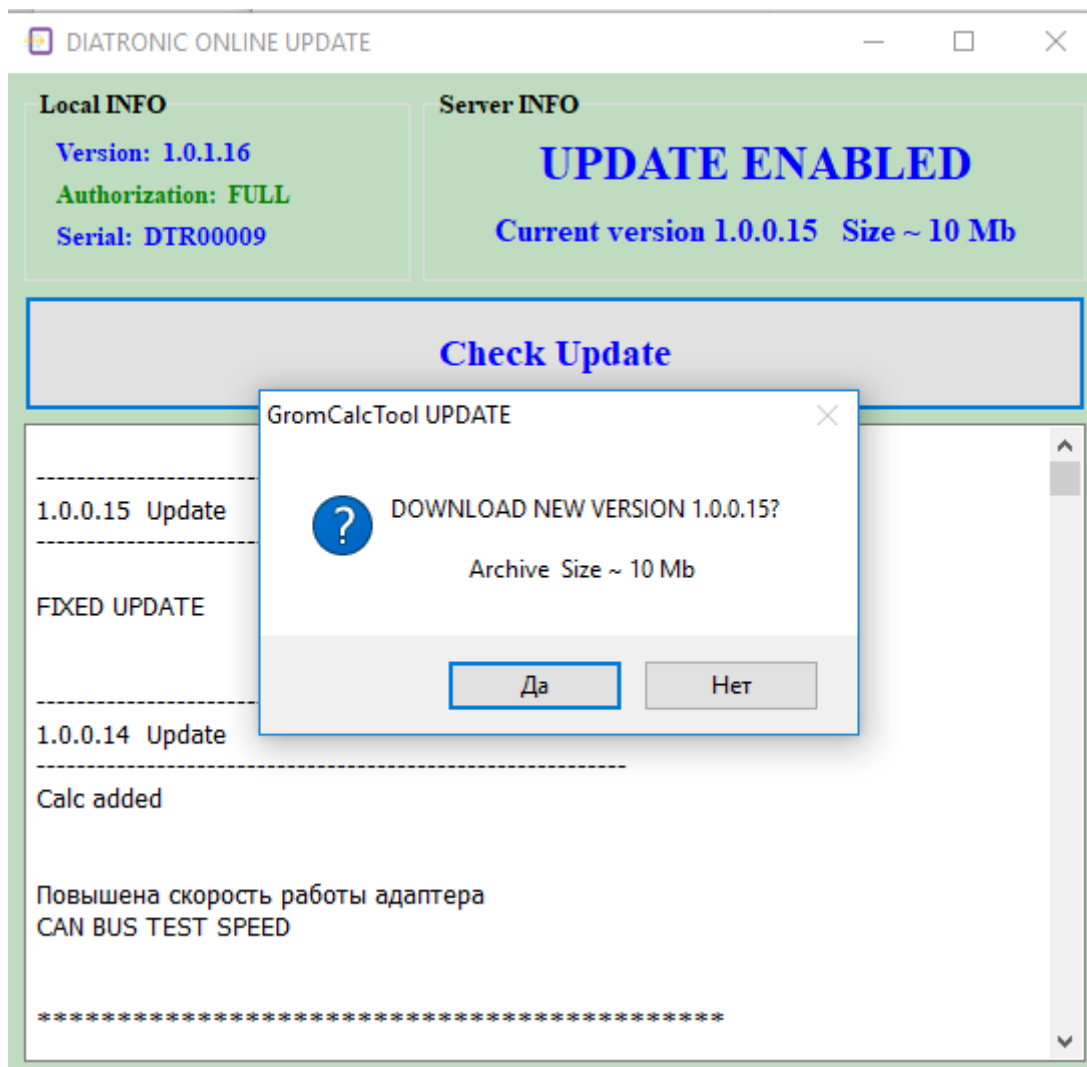
## 2. Settings



In the settings menu, select the COM PORT on our adapter, and close the window, when the window is closed, the program will create a ini file with the settings and remember the port number.

Button Select Prog Exe provides the flexibility of running third-party program programmer, to work with dumps.

### 3. Update



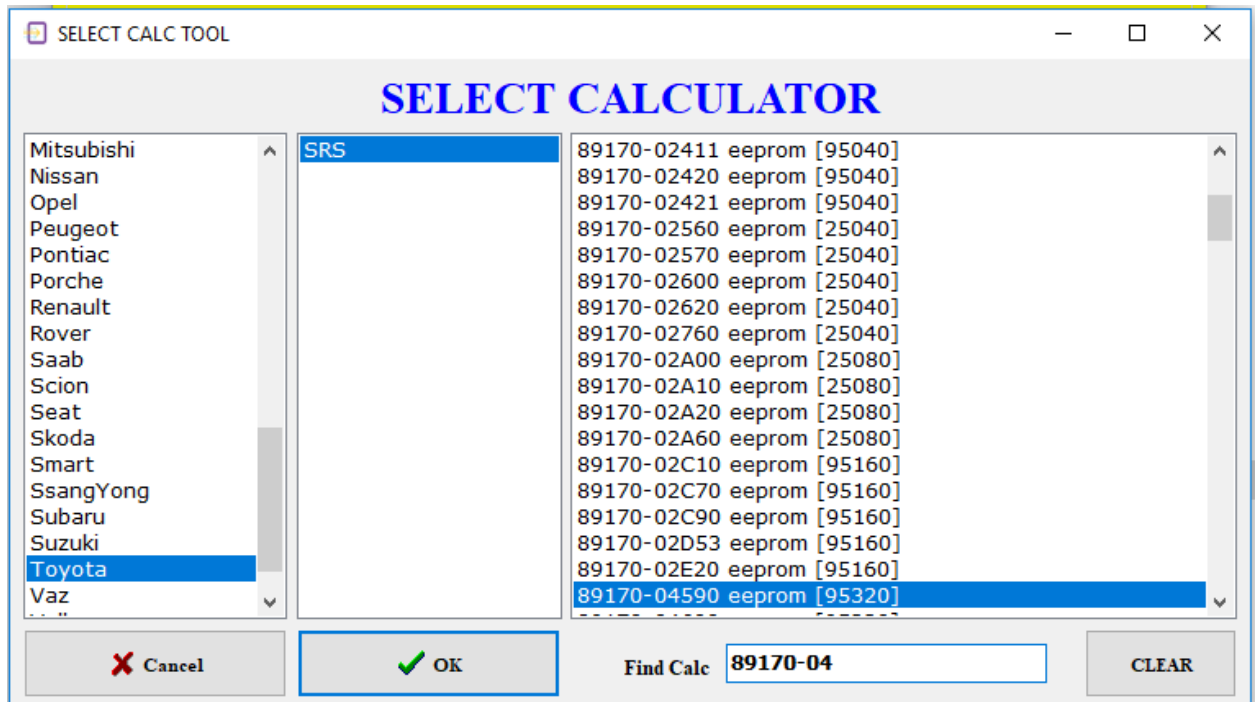
Update the program online in the menu 'ONLINE'.

The program checks for updates, and when available offers download.

Updates are stored in the root directory of the program in the Update folder, if this folder you do not, the program will create it automatically.

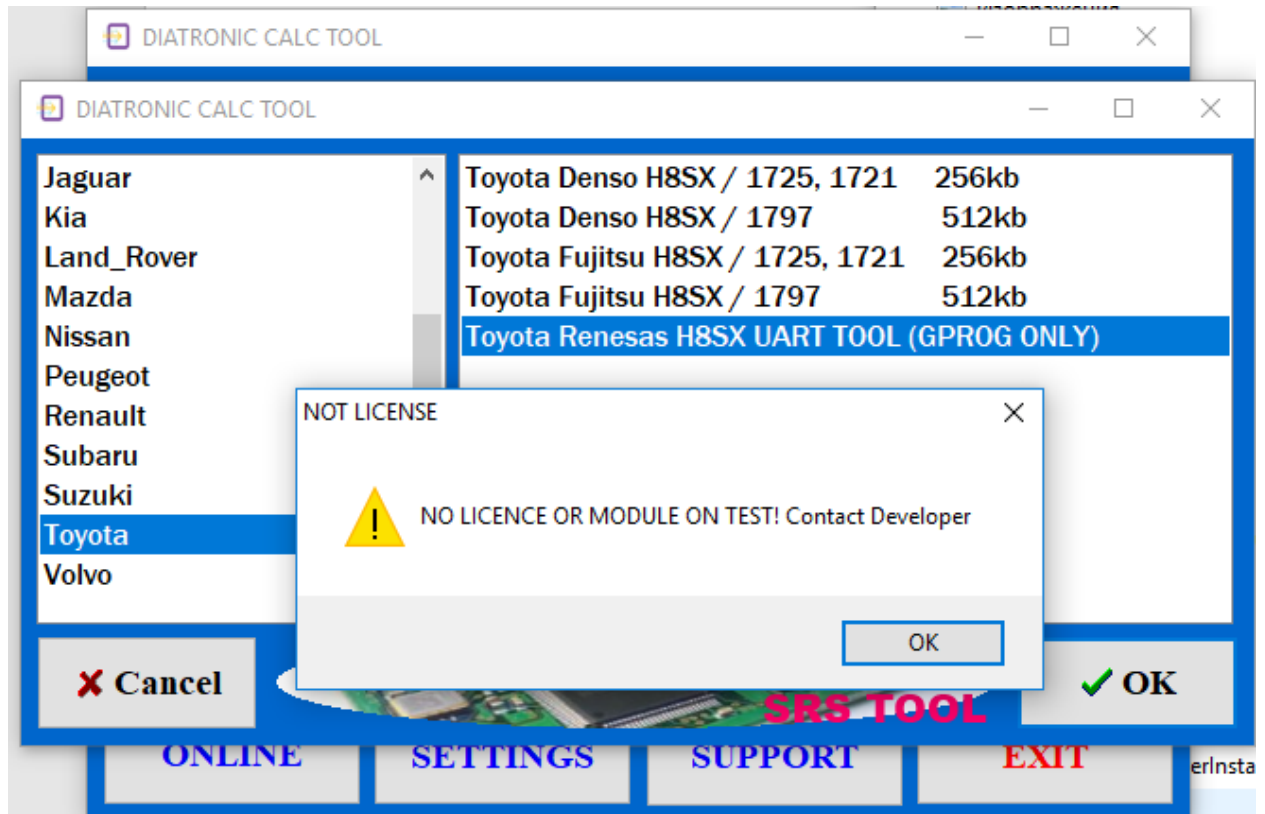
Updates come out about 1 every 1-2 weeks

#### 4. CalcTool



Menu CalcTool you can work with dumps ECU SRS and ODO.

## 5. Work OBD Module.



If the module you are seeing this message, it means that the module is still being tested and will soon be available.

All modules have built-in assistance for connecting and working with the module for the call, click the INFO button

## **6. Work SRS Toyota-Subaru SRS.**

**Work with blocks SRS TOYOTA - SUBARU is made in two stages, work mode and Boot Mode.**

**Work Mode.**

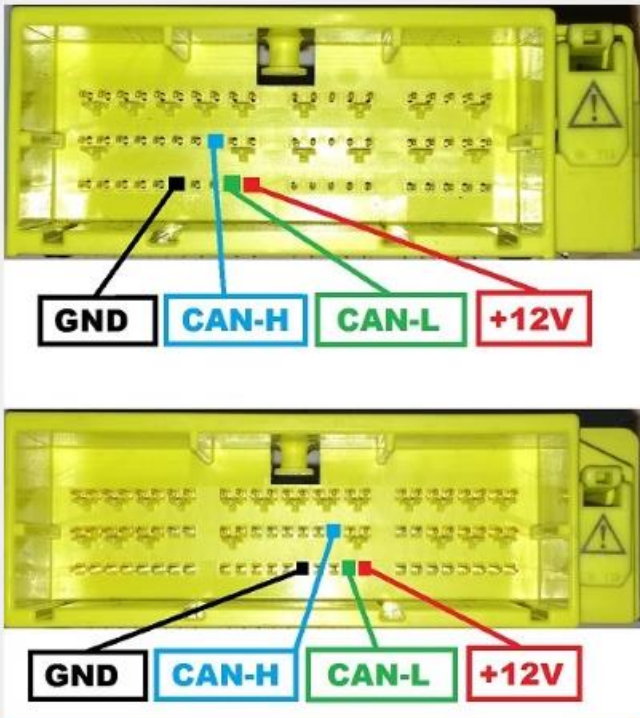
**In the work mode read and erase main flash memory and save it.  
Reading is possible both on the table and in the car.**

## Boot Mode.

In Boot Mode it is writing to flash and erasing EEPROM, the data about the accident.

For unit transfer in boot mode, you must erase the flash in operating mode, connect RESET PIN of MCU with +5 volts through a resistor of 4,7-10kOm

Renesas DENSO Connection



**GND** **CAN-H** **CAN-L** **+12V**

**GND** **CAN-H** **CAN-L** **+12V**

1. Read and save FLASH DATA.  
2. Erase FLASH.  
3. To change the MCU in boot mode, To do this, To lift the RESET MCU from PCB!!! To connect the RESET to the MCU with +5v through the resistor 10kOm.  
4. In boot mode, erase EEPROM, and write the previously read FLASH  
5. To remove the installed resistor, and check to see that unit in work mode.

RESET

PLQP0100KB-A (LQFP-100) (top view)

YouTube VIDEO

After writing flash, the resistor must be removed.